

ACCUVAC Basic

Suction pump to clear the airways

Secretions in the patient's respiratory tract hinder ventilation and gas exchange and thus reduce the effectiveness of ventilation. Only after the secretions have been removed can effective ventilation take place. With the secretion suction pump ACCUVAC Basic the suctioning of the oropharynx is simple and safe. Thanks to the infinitely adjustable vacuum regulation, the pump can be used in any situation – even in pediatrics.



ACCUVAC Basic,
WM 10709



Disposable
collection canister



Wall mounting
incl. installation set

Flexible and practical

- also suitable for use in pediatrics
- integrated battery pack for flexible use

Safe

- robust and tilt-resistant
- more patient safety with infinitely adjustable negative pressure regulation of -0.05 to -0.8 bar via the rotary dial
- extra vacuum regulation with suction hose with fingertip control
- safe secretion collection in autoclavable reusable canister with bacteria filter or with disposable canister with integrated overflow valve

Convenient

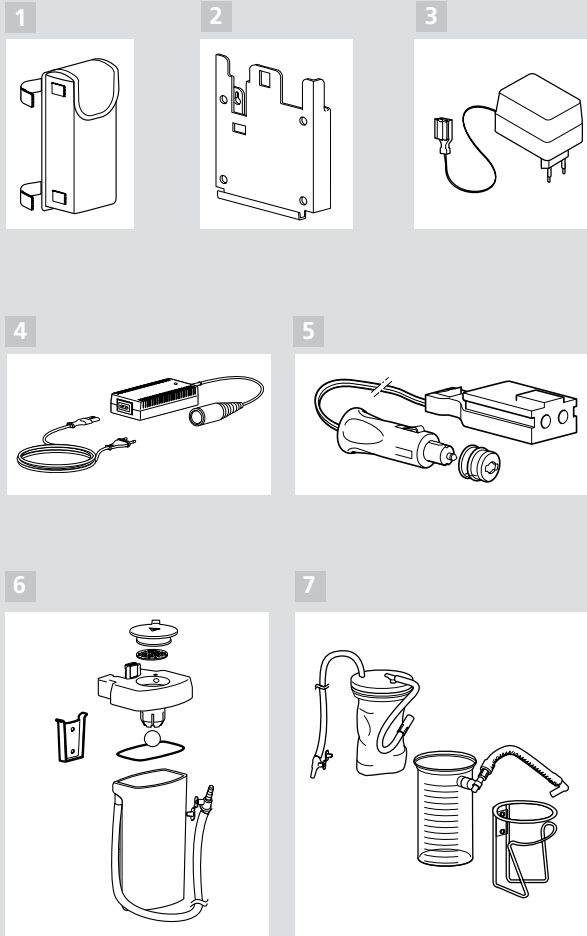
- quick release and removal of device at touch of a key
- very quiet
- integrated hose holder on front of device, battery pack voltage indicator and accessories bag mounted on device side
- easy clean and care

Battery charging

- optional: practical wall mounting with integrated charger
- optional: power pack and battery charger with long-range port for charging and operation in network
- optional: 12-V cable for operation in a motor vehicle

Secretion Suction Pump

Device Description	WM-Nr.
ACCUVAC Basic with disposable collection canister and charger	10700
ACCUVAC Basic with reusable collection canister and charger	10709
ACCUVAC Basic with disposable collection canister, wall mounting and 12-V cable	10705
ACCUVAC Basic with reusable collection canister, wall mounting and 12-V cable	10715



Accessories

- 1 Accessory bag – WM 10655**
- 2 Wall mounting – WM 15208**
including installation set
- 3 Charger – WM 10750**
complete with Europe plug and country adapters for US, GB and AU
- Lead battery (not shown) – WM 10747**
- 4 Power pack and battery charger – WM 2610**
for 100 to 240 volt AC on 12 V socket
- 5 12-V cable – WM 10650**
- 6 Conversion set – WM 15261**
Reusable collection canister for ACCUVAC
The conversion set consists of: one set of reusable collection canister (WM 15269), set of holders for reusable collection canister (WM 15271)
- 7 Conversion set – WM 15262**
Disposable collection canister for ACCUVAC
The conversion set consists of: set of disposable collection canister (WM 15268), set of holders (WM 15172)

Our complete range of therapy solutions, accessories and mask systems is at: www.weinmann.de

Technical Data ACCUVAC Basic



Product class as per 93/42/EEC:	II b	Suction capacity at 12 V and free flow:	> 20 liters/min.
Fulfills product standards:	EN 60601-1 EN ISO 10079-1 EN 1789	Maximum negative pressure (vacuum) at 12 V:	0.8 bar (80 kPa)
Dimensions (W x H x D):	385 x 280 x 140 mm	Degree of protection from water:	IPX 1
Weight:	about 5.4 kg	Overflow valve filter:	at least 99.8 % of particles of 2.8 µm
Temperature ■ Operation: ■ Storage:	-18 °C to +40 °C -40 °C to +70 °C	Secretion canister:	Disposable collection canister Reusable collection canister
Charging voltage:	12 V to 13.8 V	Volume of collection canister:	900 ml
Motor output:	50 W	Overflow protection:	Overflow valve filter
Maximum power consumption:	3.5 amp	Suction hose:	Ø 5 mm, 1800 mm long
Battery type:	Lead, 3.4 Ah	NATO Stock Nr.:	6515-12-366-6181

■ **Germany** ■ Weinmann Geräte für Medizin GmbH+Co.KG · P.O. Box 540268 · D-22502 Hamburg · Kronsaaßweg 40 · D-22525 Hamburg · E: info@weinmann.de · www.weinmann.de · T: +49-(0)40-5 47 02-0 F: +49-(0)40-5 47 02-461 ■ Center for Production, Logistics, Service · Weinmann Geräte für Medizin GmbH+Co.KG · Siebenstücken 14 · D-24558 Henstedt-Ulzburg · T: +49-(0)4193-88 91-0 F: +49-(0)4193-88 91-450 ■ **Switzerland** ■ G. Weinmann AG – Neuenhof · T: +41-(0)56-416 41 11 · E: info@ch.weinmann.de · www.weinmann.de ■ **France** ■ Weinmann S.A.S. – Paris-Igny T: +33-(0)1 69 35 53 20 · E: info@fr.weinmann.de · www.weinmann.de ■ **Russia** ■ Weinmann SPb GmbH – Saint-Petersburg · T: +7-(812)6 33 30 82 · E: info@ru.weinmann.de · www.weinmann.de ■ **China** ■ Weinmann GmbH+Co.KG (Shanghai Rep. Office) · T: +86 21 32 26 26 98 · E: info@cn.weinmann.de · www.weinmann.de

3002.2-01-EN-0409-2 © Weinmann, Hamburg. Duplication of any kind only with the express permission of Weinmann. All rights to design and specification modifications reserved.